

TTGO115 | TravelMount™ Windshield Mount for Tomtom Go 520 / 720 / 920 / 920T

Compatible with:

- Tomtom GO 520 / 720 / 920 / 920T devices



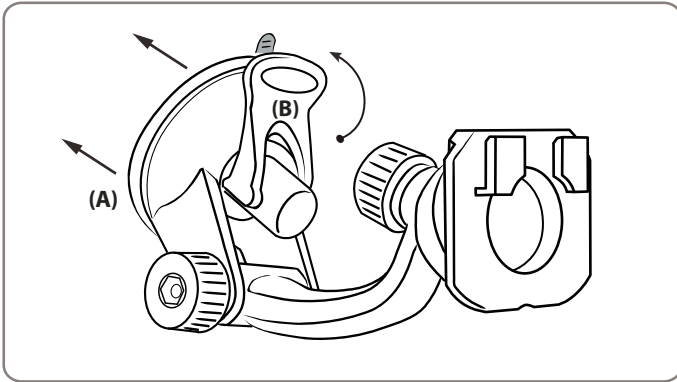
CM014-KST-2



APTTGO520
for Tomtom GO 520,
720, 920, and 920T

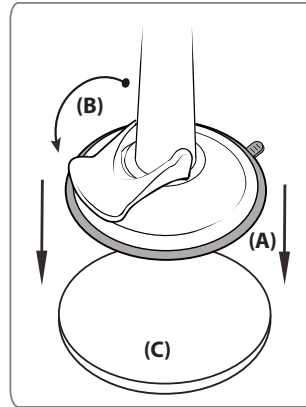


AP036



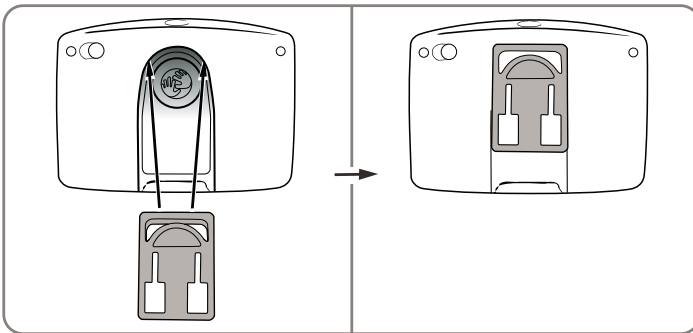
Windshield Installation

- Step 1. Push the pedestal suction cup (A) firmly to the windshield. Flip the lever (B) down to secure the suction cup.



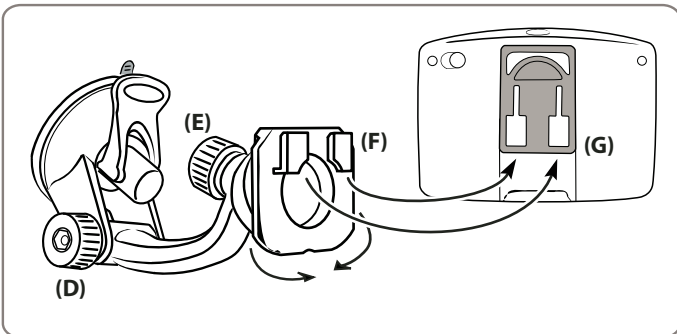
Dash Installation

- Step 1. Locate a safe flat surface on the dash or console to mount the pedestal. Clean the dash with the alcohol pad provided. Let the dash surface dry before applying the adhesive disc (C).
- Step 2. Push the pedestal suction cup (A) firmly to the disc (C). Flip the lever (B) down to secure the suction cup.



Instructions for APTGO520 Adapter Plate

- Step 1. Attach the adapter plate by sliding it up into the slot on the back of the Tomtom GO 520, 720, 920, or 920T device as shown above.
- Step 2. Follow step 3 from *Pedestal Adjustment & Device Cradle Installation* below.



Pedestal Adjustment and Cradle Attachment

- Step 1. Adjust the angle of the pedestal arm by loosening the adjustment knob (D).
- Step 2. Adjust the angle and rotation of the pedestal head by loosening the adjustment knob (E).
- Step 3. Attach the device to the dual-T tab head (F) by inserting the T-tabs into the T-slots (G).

⚠ Safety Precautions

Do not install Arkon products over an air bag cover or within the air bag deployment zone. Arkon Resources, Inc. assumes no responsibility of liability for injury or death as a result of car crashes and/or air bag deployment.

Arkon Resources, Inc. is not responsible for any damages caused to your car, your device, or yourself due to the installation or use of the pedestal mount.

ARKON
RESOURCES INC.

The Mobile Mounting Specialists™

Consumer Hotline:
(USA) (800) 841-0884
(INT'L) (626) 254-9005
Mon-Fri. 9am-5pm, PST

www.arkon.com
Arcadia, CA 91006 USA
Made in Taiwan

© Copyright 2007 Arkon Resources, Inc.